

ASTEROID Installation Instructions

Version 5.28 (64 bit), August 2021

1 Installation Overview

Before launching ASTEROID, the software and database/s must be installed on your system. We have utilized the latest installation technology to make this as easy as possible. The installation procedure is described below.

If you are in a corporate environment and a system administrator or technical support person normally installs your software, please pass on these instructions to that person.

1.1 Preparing for installation from a downloaded zip file

If you have downloaded the ASTEROID software from a web link, you will have a zip file with a name in this format.

ASTEROID_5_x_y_z.ZIP

The x, y and z will be numbers indicating the version of the ASTEROID software.

Before proceeding with the installation, you should extract all the files contained in the zip archive to an empty folder on your hard disk. The files can be extracted using one of the following methods.

- In Windows Explorer, right click the zip file and select the 'Extract All...' command to start the zip file extraction wizard.
- Zip archiving utilities such as Winzip or 7-Zip can also be used to extract the files.

The software installer is the extracted file named 'setup.exe'.

Similarly, databases downloaded as a zip file can be extracted and stored in a hard disk or network folder which will be your designated ASTEROID Data directory.

1.2 Preparing for installation from a CD or DVD

All ASTEROID CDs/DVDs supplied by Roy Morgan have a menu program called 'Browser.exe'. The menu allows you to access the software installer, the database installer and any other functions contained on the CD/DVD.



To start the CD/DVD browser, simply browse to the root directory of the CD/DVD and double-click 'Browser.exe'. To select an item from the browser menu, move the mouse cursor over the item. Click to run the item.

When 'Install Software' is selected, a second menu appears with software installation options. You may choose to install ASTEROID locally on your PC or read the documentation about Network Installation.



All resources on the CD/DVD are uncompressed and may be copied to your network or hard drive. The software installer is in the ASTEROID folder, and each database is in a folder named by the descriptive name of the database.

2 Software Installation

The ASTEROID installer (setup.exe) is used to install the ASTEROID application in your Windows environment and perform all necessary configuration tasks.

2.1 Quick Start

- To install ASTEROID on a single PC for the first time, see page 6.
- To install ASTEROID on a network for the first time, see page 14.
- To upgrade a single PC (from a previous version of ASTEROID), see page 11.
- To upgrade a network, see page 17.

2.2 System Requirements.

- Personal computer using an Intel Pentium 4 class processor or later model (including Intel Xeon and Intel Core family) or compatible. Processor must support SSE2 instructions.
- Microsoft Windows 7, Windows 8 or 8.1, or Windows 10 (or Windows Server 2008 R2 or later). N.B. A 64 bit build of Windows is required to run Asteroid 64 bit.
- Memory: 4GB. Depending on the Windows version, less may work but will limit the complexity of tasks that ASTEROID is able to run.
- Hard disk space required: Approx 110MB (for software only).
- VGA or higher resolution monitor (minimum recommended resolution is 1280 x 1024 pixels).
- CD-ROM drive (or network access to CD-ROM) for software and data installation. (Not required if installation files have been provided as web link downloads).
- Mouse.

2.3 Component Software

Some of the functionality in ASTEROID is built from industry standard 3rd party software components. These components are provided in the form of DLL files that are installed into the ASTEROID Program directory. The following components are supplied.

- ChartFX 7, charting support, copyright © 2007 Software FX Inc.
- Spread.NET, spreadsheet control, copyright © GrapeCity Inc.

All licence requirements for components have been met by Roy Morgan Research.

2.4 Pre-Requisites

ASTEROID requires the following pre-requisites to run successfully. The Setup program will offer to install these if they do not exist on your system.

- Microsoft .NET Framework 4.7.2.

2.5 Installing ASTEROID on a single PC

Follow this procedure to install ASTEROID on a single PC.

To install the ASTEROID software, you must run the Setup program.

To run the Setup program from a CD/DVD:

1. Close any other user applications that are open.
2. Place the ASTEROID CD in your CD-ROM drive.
3. Run the CD browser (Browser.exe).
4. Select “Install Software” from the menu.
5. On the “Installation Options” menu click “Run Asteroid Setup”.

Alternatively, to run Setup from a download or directly from a CD/DVD:

1. Close any other user applications that are open.
2. Run Setup by double-clicking Setup.exe.

2.5.1 Setup Modes

SETUP will run in different modes, depending on the status of ASTEROID on your PC.

- If ASTEROID is not currently installed (or the existing version is old enough that it does not qualify for upgrade), Setup will perform a Full Setup (see below).
- If a recent version of ASTEROID is installed and qualifies for upgrade, Setup will perform an Upgrade Setup (see page 11).
- If the current version of ASTEROID has already been installed, Setup will perform a Maintenance Setup (see page 13).

Note that the 64-bit editions of ASTEROID (version 5.28 onwards) can co-exist with the older 32-bit editions. The first time you install a 64-bit edition, a Full Setup will be performed.

2.5.2 Full Setup

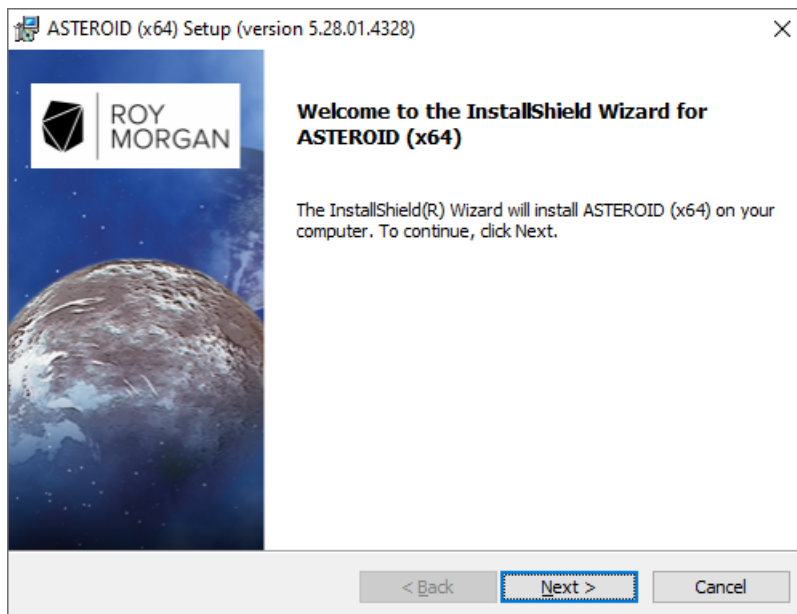
Setup performs a Full Setup if ASTEROID is not currently installed, the installed version is old enough that it does not qualify for upgrade, or the previous version was un-installed.

The user interface for Setup is a “wizard” which guides you through the various options. Default options are provided which will be correct in most cases.



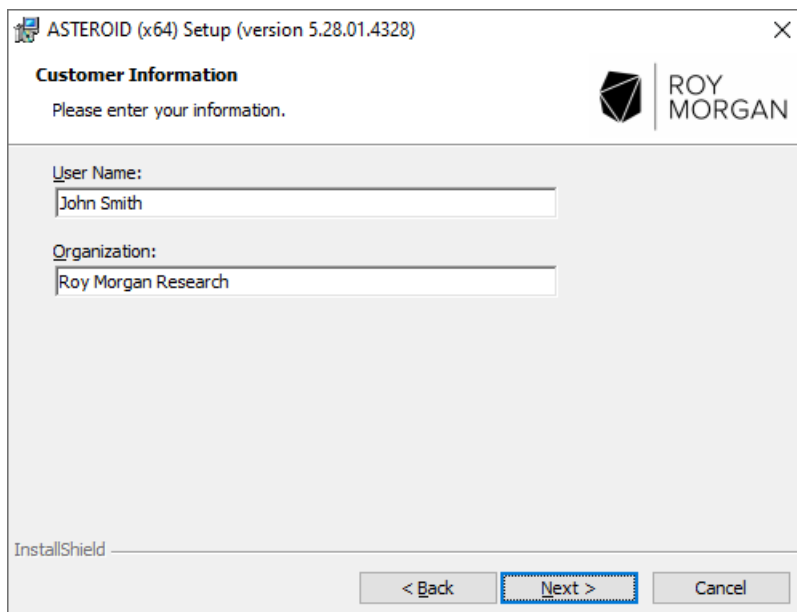
These buttons are used to step through the SETUP wizard dialogs. Click Next to proceed or Back to go back to the previous step.

2.5.2.1 Welcome dialog



The Welcome dialog identifies the version of ASTEROID about to be installed. Click Next to proceed.

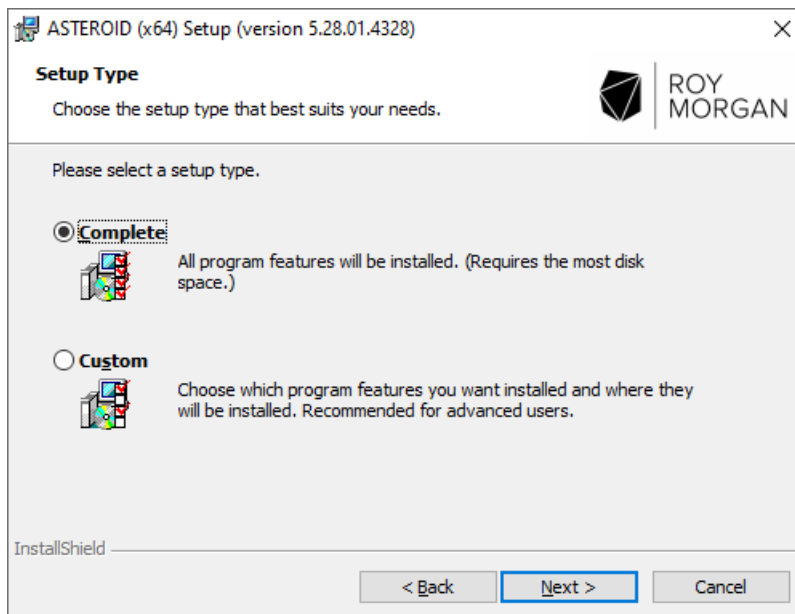
2.5.2.2 Customer Information dialog



The Customer Information dialog lets you enter your name and company name. Default values are supplied from your Windows configuration.

Click Next to proceed.

2.5.2.3 Setup Type dialog

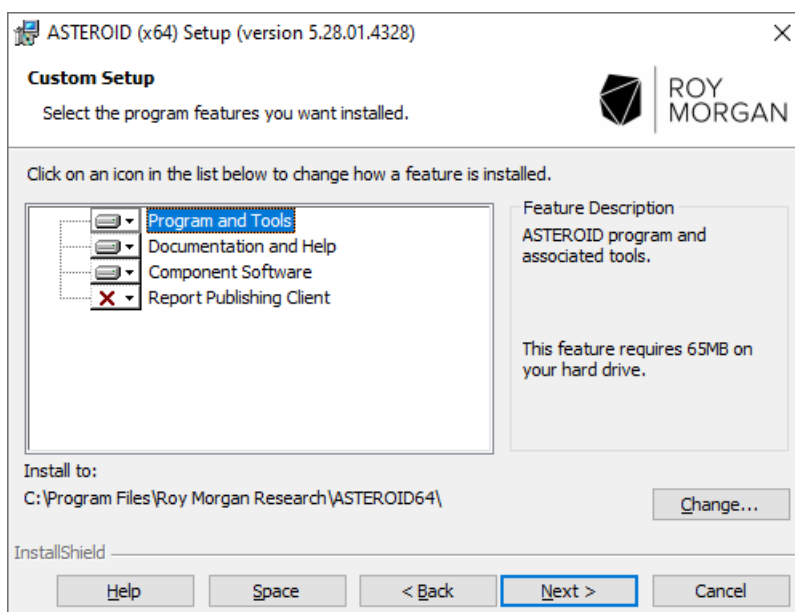


The Setup Type dialog lets you choose the type of setup, including the ability to customize the features installed for advanced users. The options are:

- Complete – Install all standard program features locally on the PC. This is the recommended option.
- Custom – Allows advanced users to install selected program features locally on the PC. If Custom is selected, another dialog is inserted in the sequence, which provides the option to select or deselect various features within ASTEROID and/or change the destination folder.

Choose the appropriate option, then click Next to proceed.

2.5.2.4 Custom Setup dialog (Custom setup type only)

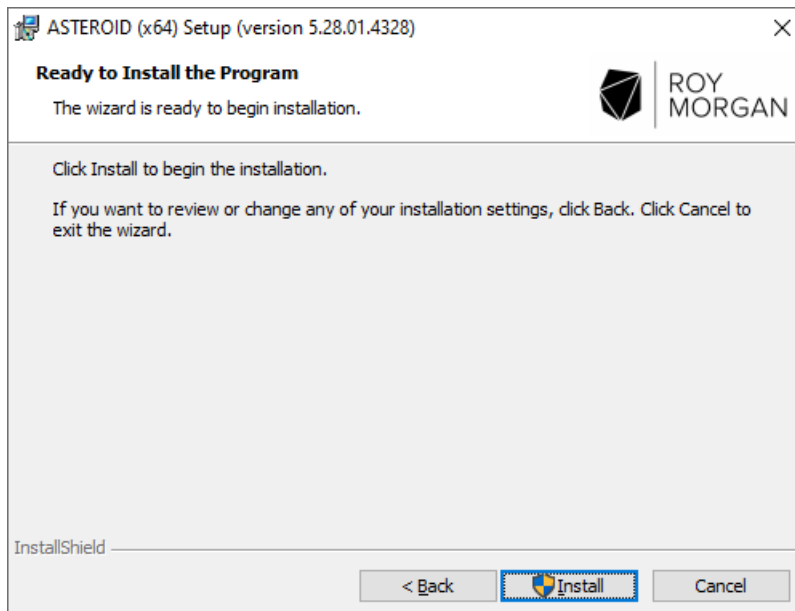


The Custom Setup dialog only appears if you selected the Custom setup type. It lets you select or de-select features for installation. For example, it is possible to not install the 'Report Publishing Client' which is not required for regular desktop use of ASTEROID.

The destination folder may be changed by clicking the Change... button (not recommended).

Select the features required, then click Next to proceed.

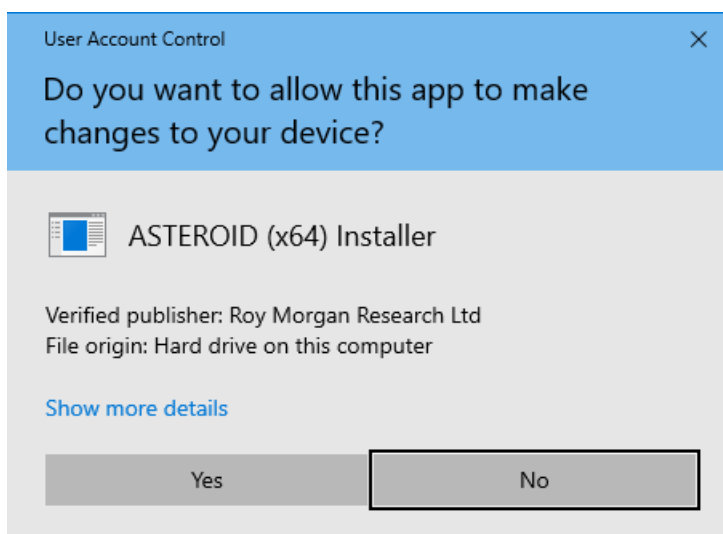
2.5.2.5 Ready to Install the Program dialog



The Ready to Install the Program dialog gives you a last opportunity to review or change any of the settings before the file copy process begins.

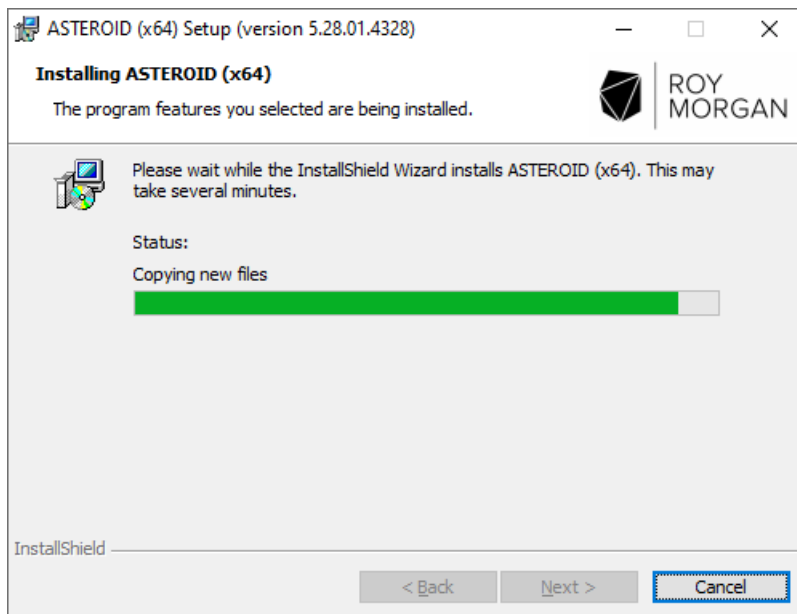
Click Back to change any settings. Click Install to start the file copy process.

Depending on your security environment, the system may prompt with the User Account Control dialog at this stage.



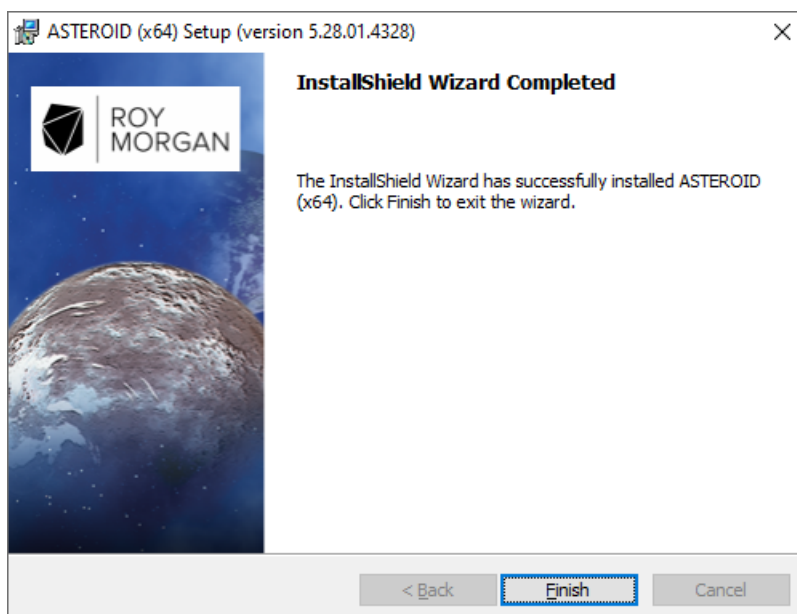
If you are happy with the details listed by User Account Control, click Yes to proceed.

2.5.2.6 Installing ASTEROID dialog



The Installing ASTEROID dialog is displayed while file copying and configuration is in progress.

2.5.2.7 Wizard Complete dialog



The Wizard Complete dialog is displayed when file copying and configuration is complete.

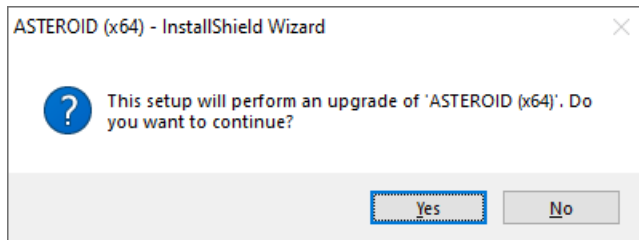
Depending on the status of your computer before Setup was run, the Wizard Complete dialog may request that the computer is re-booted at this point. You must re-boot before using ASTEROID if the Wizard Complete dialog asks you to do so.

Click Finish to exit from Setup.

2.5.3 Upgrade Setup

Setup performs an Upgrade Setup if a recent version of ASTEROID is installed and qualifies for upgrade.

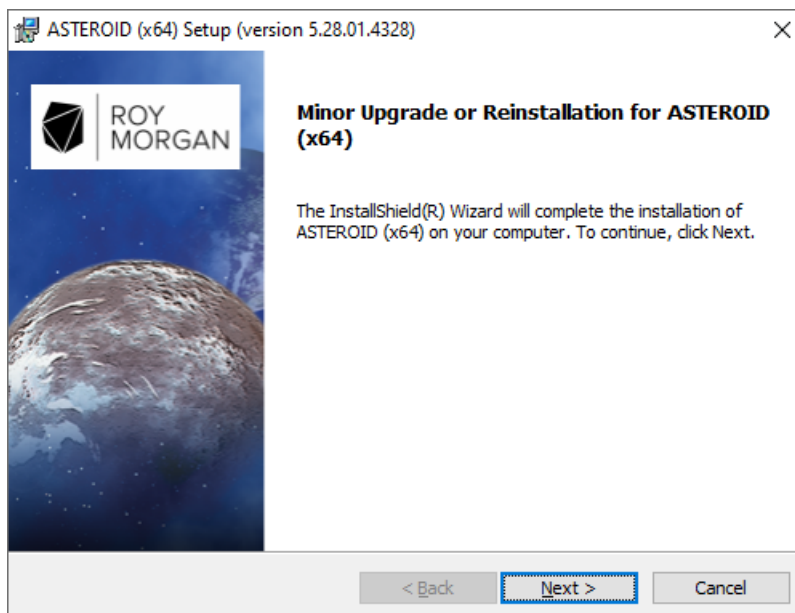
If Setup determines that it can do an upgrade, the following message is displayed.



Click Yes to proceed with the upgrade.

N.B. An upgrade uses the settings from the original ASTEROID setup, therefore most of the wizard dialogs from the full setup do not appear. The upgrade wizard consists of only 3 dialogs.

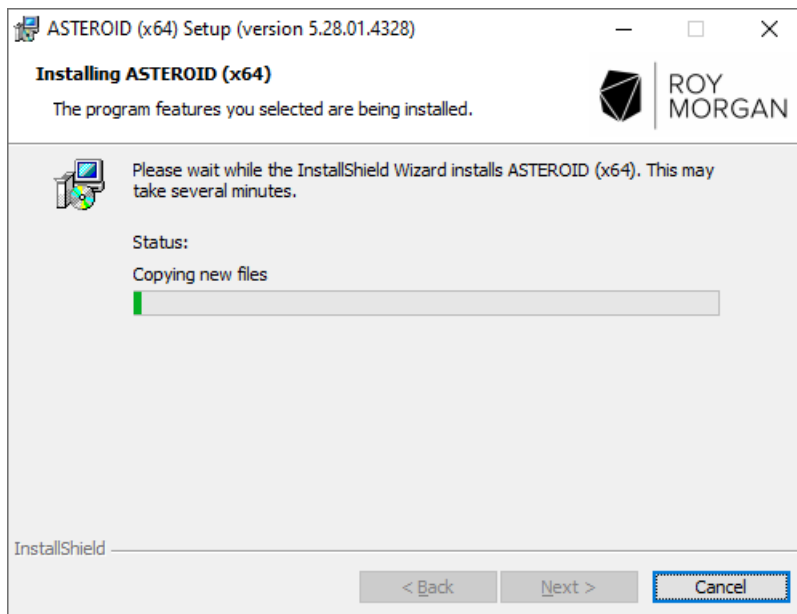
2.5.3.1 1. Welcome dialog



The Welcome dialog identifies that this is an upgrade and shows the version of ASTEROID that will be installed.

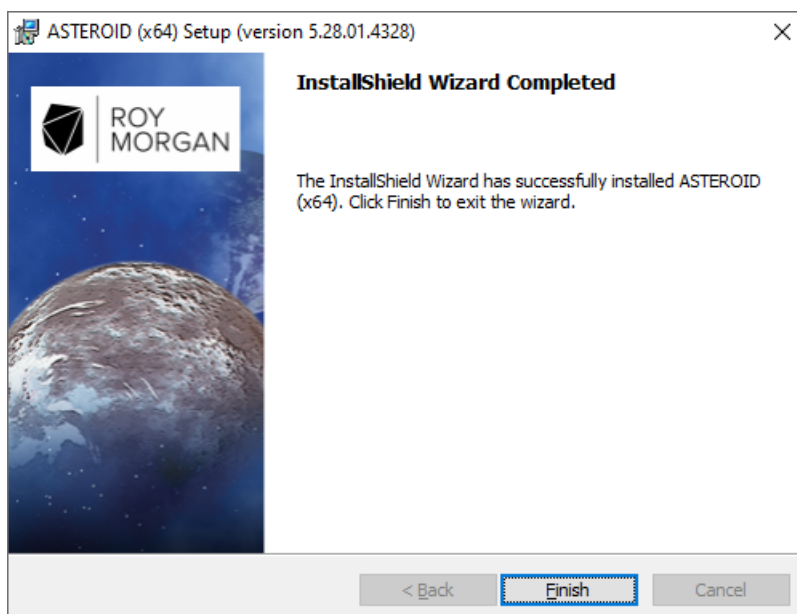
Click Next to proceed and apply the upgrade.

2.5.3.2 Installing ASTEROID dialog



The Installing ASTEROID dialog is displayed while file upgrading and configuration is in progress.

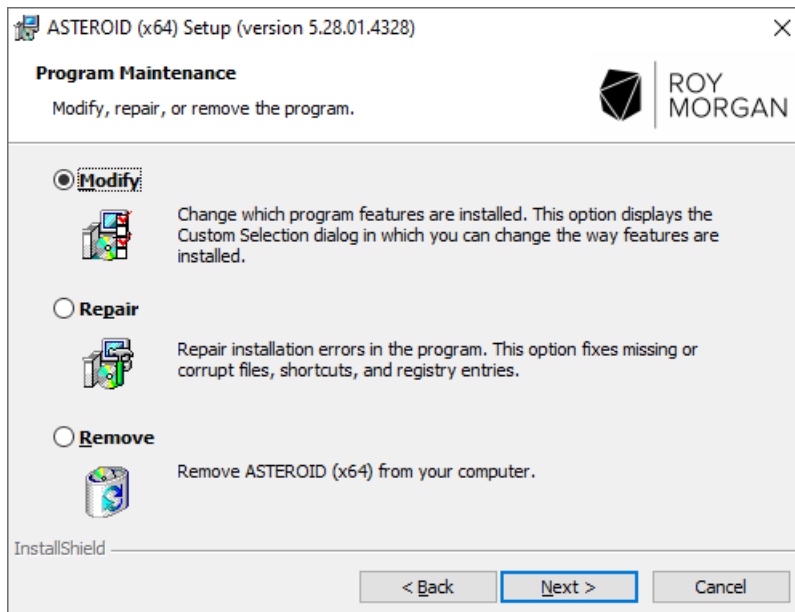
2.5.3.3 Wizard Complete dialog



The Wizard Complete dialog is displayed when file upgrading and configuration is complete. Click Finish to exit from Setup.

2.5.4 Maintenance Setup

Setup performs a Maintenance Setup if the current version of ASTEROID has already been installed.



The maintenance dialog lets you:

- Modify the features installed during a custom setup (for advanced users only).
- Repair a previous installation. This is useful if you accidentally deleted files or shortcuts installed with ASTEROID.
- Remove ASTEROID completely.

2.6 Installing ASTEROID on a Network

ASTEROID is designed to install and run in a network environment if required. ASTEROID installation files (and databases) may be held in a central location on a network file server and shared by many users. As with all Windows applications, the ASTEROID application must be installed on each PC.

There are two steps required to set up the ASTEROID software on a network:

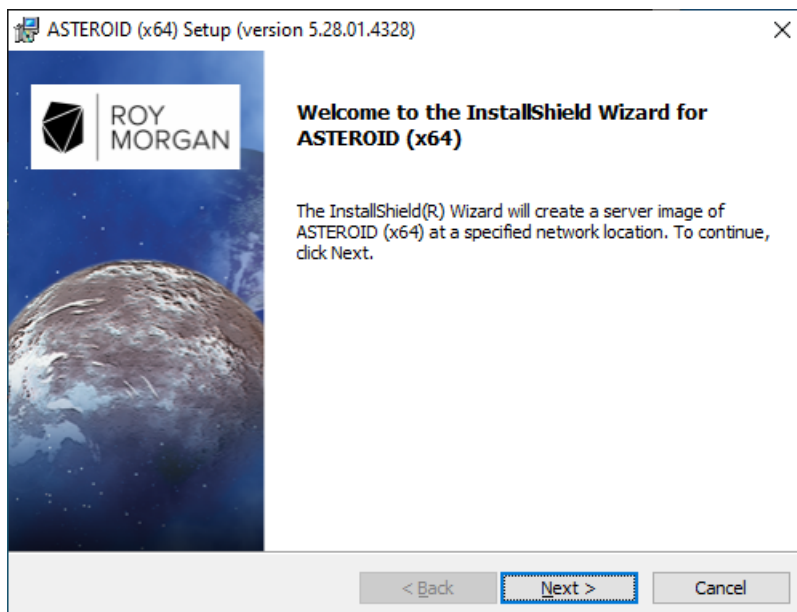
1. The “network image” of ASTEROID must be created. The network image is an uncompressed copy of all the ASTEROID setup, program and other files residing on a network file server.
2. ASTEROID must be configured on every user workstation, by running Setup.exe from the network image. This may be done manually, or by a script or other corporate deployment mechanism.

2.6.1 Establishing the Network Image (Administrative Setup)

The network image is created by running Setup in administrative mode. To run an administrative setup, the argument **/a** must be included on the Setup command line. For example, to run an administrative setup from the ASTEROID CD in drive D:, type the following command at the Run command or Windows command prompt.

```
D:\ASTEROID\SETUP.EXE /a
```

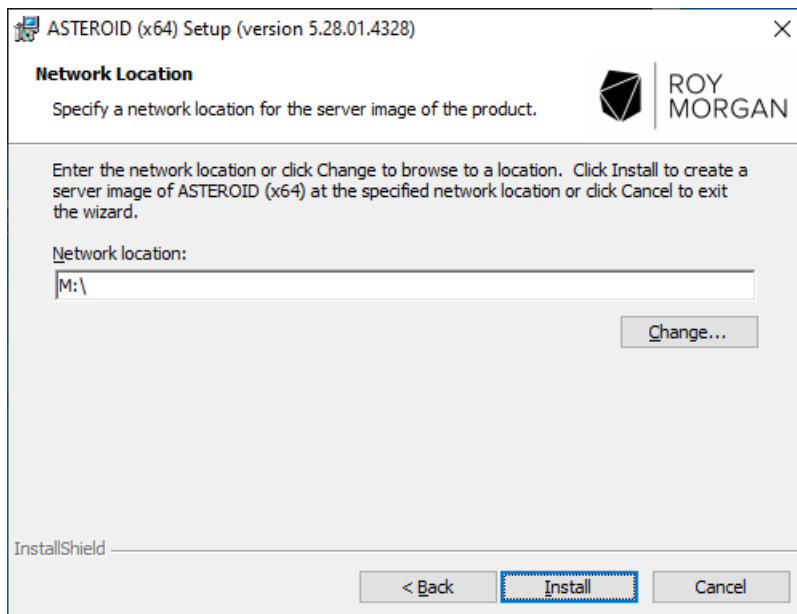
2.6.1.1 Welcome dialog



The Welcome dialog identifies that this is an administrative setup (i.e., will create a server image) and shows the version of ASTEROID.

Click Next to proceed.

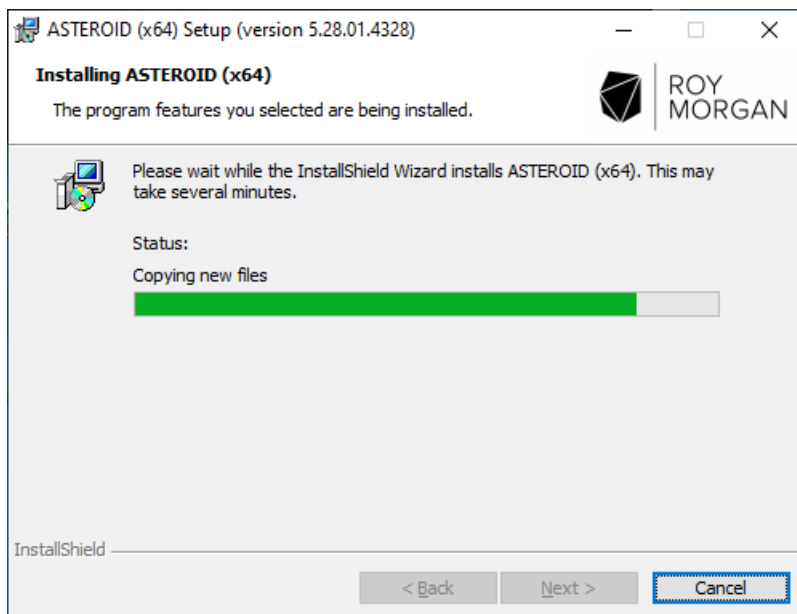
2.6.1.2 Network Location dialog



The Network Location dialog lets you specify a destination location for the network image. Enter a path or click Change to browse for a location.

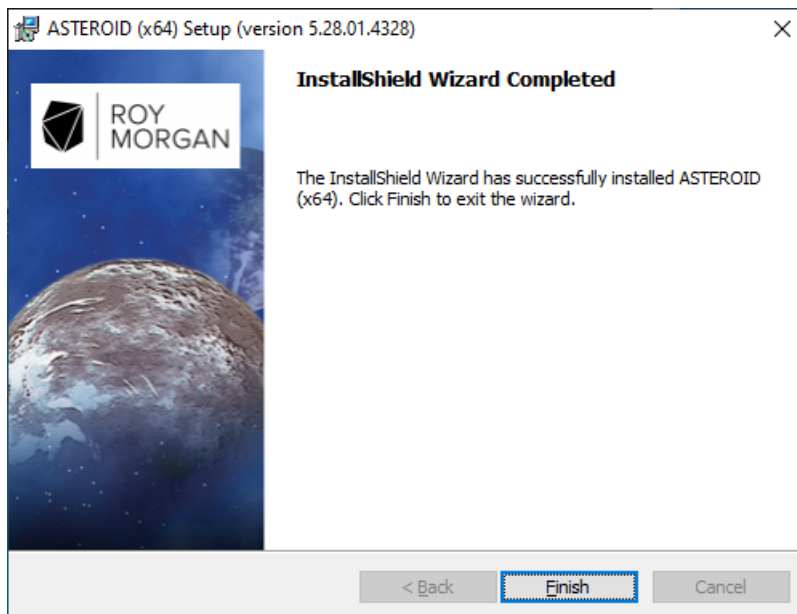
Note: For Windows with UAC enabled, mapped drive letters may not be available here (due to the Windows security model). For these platforms, enter a UNC path, or output to a local disk then copy the network image to the desired location.

2.6.1.3 Installing ASTEROID dialog



The Installing ASTEROID dialog is displayed while writing the network image.

2.6.1.4 Wizard Complete dialog



The Wizard Complete dialog is displayed when the network image is completed.

Click Finish to exit from Setup.

2.6.2 Installing User Workstations

To configure a user workstation, the ASTEROID application must be installed by running Setup.exe from the root of the network image.

This may be achieved in a multitude of ways, e.g.

- Manually, by logging on the workstation and running Setup.exe from the network image. Follow the instructions for running Full Setup, see page 6. (N.B. If ASTEROID was previously installed on the workstation, Setup may invoke an Upgrade Setup, see page 11.).
- Scripted deployment.
- Deployment of MSI Setups using Active Directory Group Policy.
- Third party deployment frameworks for installing MSI setups.

2.6.3 Upgrading a Network Image

If a previous version of ASTEROID has been installed as a network image, with all workstations subsequently installed from the network image, you can upgrade ASTEROID using the following procedure.

- Install the new network image by running an administrative setup (**SETUP.EXE /a**) from the new download or CD. It's recommended that you don't overwrite the older network image, i.e., use a new folder as the destination. Name the network image folders with the ASTEROID version for clarity.
- Re-install the workstations by running Setup.exe from the root of the new network image. This will invoke an Upgrade Setup on each workstation, see page 11.

2.6.4 Setting Network Default Directory Paths

The factory default setting for the ASTEROID User & Data directories is:

```
<My Documents>\ASTEROID\
```

where <My Documents> is the virtual root established in the Windows configuration for the current user. Any paths established by a previous ASTEROID installation are used in preference.

In a network environment, the system administrator may change the default path settings for all users by editing the file <Defaults.ini> in the ASTEROID Program directory (within the network image). In particular, it may be useful to change the default Data path to indicate the network folder where ASTEROID databases are stored.

The original content of <Defaults.ini> is as follows.

```
[Directories]
Data=%MYDOCS%\ASTEROID\
User=%MYDOCS%\ASTEROID\
;
; (N.B. %MYDOCS% is a placeholder for "My Documents")
```

Changes to <Defaults.ini> will only be effective for new users who have not yet run ASTEROID. Once ASTEROID is run, the user's path configuration is stored in their private registry key.

2.6.5 InstallShield Silent Installation

The installer for 64-bit versions of ASTEROID is an InstallShield Basic MSI setup.

The silent installation method using 'setup.exe /s' available with the previous 32-bit InstallScript installer is no longer available. However, ASTEROID can still be installed silently using the generic silent installation capabilities of Windows Installer. See the information on MSIEXEC installation below.

2.6.6 Installation using MSIEXEC (Windows Installer)

For deployment frameworks that require an MSI file for installation, the "ASTEROIDx64.msi" file may be used with an appropriate MSIEXEC command.

The general pre-requisites for ASTEROID (see page 5) should be installed first, i.e.

- Microsoft .NET Framework 4.7.2.

To install ASTEROID for the first time or where not eligible for upgrade (Full Setup):

```
msiexec.exe /i "ASTEROIDx64.msi" ALLUSERS=1 /qn /norestart /log output.log
```

To replace a recent version of ASTEROID where eligible for upgrade (Upgrade Setup):

```
msiexec.exe /i "ASTEROIDx64.msi" REINSTALL=ALL REINSTALLMODE=vomus  
ALLUSERS=1 /qn /norestart /log output.log
```

The deployment framework logic must decide between the Full Setup and the Upgrade Setup and use the appropriate command.

Alternatively, Setup.exe may be used as a bootstraper for msiexec with the following syntax.

To install ASTEROID for the first time or where not eligible for upgrade (Full Setup):

```
setup.exe /v"ALLUSERS=1 /qn /norestart /log output.log"
```

To replace a recent version of ASTEROID where eligible for upgrade (Upgrade Setup):

```
setup.exe /v"REINSTALL=ALL REINSTALLMODE=vomus  
ALLUSERS=1 /qn /norestart /log output.log"
```

The output.log file should include a full path to a user specific location. Success or failure can be determined by interrogating output.log for the string "error status: 0."

2.7 Installing ASTEROID in Thin Client environments

ASTEROID fully supports running under Windows 2008 R2 (and later) Terminal Services, Citrix XenApp/Metaframe family and other thin client frameworks.

The application should be installed on the server using the normal procedure for your environment and following the general instructions for running ASTEROID Setup, see page 6. Generally, the thin-client server can be regarded like a stand-alone PC for the purposes of installing ASTEROID. In the case of multiple servers on a network, the servers may be installed from a common ASTEROID network image.

Configuration of Data directory and User directory requires particular attention to ensure reliable operation.

The Data directory can be set using one of the following methods.

- Edit the <Defaults.ini> file to set the path to the shared Data directory. See page 17 for more information on the <Defaults.ini> file.
- The Data directory path can also be established by setting the following registry value in a login script. This will override any effect of the <Defaults.ini> file.

```
Key: HKCU\Software\Roy Morgan Research\ASTEROID X64\Directories;  
Value: Data (REG_SZ)
```

The User directory can be set using one of the following methods.

- For a very simple setup consisting of a single server and where the User directory can be described in terms of a drive letter path (e.g., user specific home drive), the User path may be set in the <Defaults.ini> file. This must be done before any users attempt to login to the application. To ensure a robust installation, we recommend you also set the User directory using one of the methods below.
- The User directory path can be established by setting the following registry value in a login script. This will override any effect of the <Defaults.ini> file.

```
Key: HKCU\Software\Roy Morgan Research\ASTEROID X64\Directories;  
Value: User (REG_SZ)
```

N.B. For a Citrix Published application, the login script must complete before the ASTEROID application is started to ensure the paths are set in time. There are options in the Citrix configuration to achieve this.

- Alternatively, the User directory path can be supplied as a parameter on the ASTEROID command line. You can configure the "Command Line" value in the Citrix or Terminal Services properties to include the User directory path as a parameter. Using this method, Windows environment variables such as USERNAME can be used as an aid in specifying a unique path for the user. For example:

```
"C:\Program Files...\ASTEROID64.exe" "" "" "H:\ASTEROID\%USERNAME%\"
```

N.B. The user path is the 3rd command line parameter, note the 2 empty parameters between the executable path and the user path.

2.8 Directory Configuration Overview

The ASTEROID Program & Reference Files directory is set at software installation time and should not be changed.

The ASTEROID Data Files directory indicates the default location for ASTEROID databases and is used as the home location when browsing on the Open Database dialog.

Every ASTEROID user requires a User directory to store personal files such as saved tasks, report manager files, temporary working files, output listings and CSV files. The User directory must be private to each user. ASTEROID will not run if you try to share a directory with another user.

The factory default setting for the User & Data directories is:

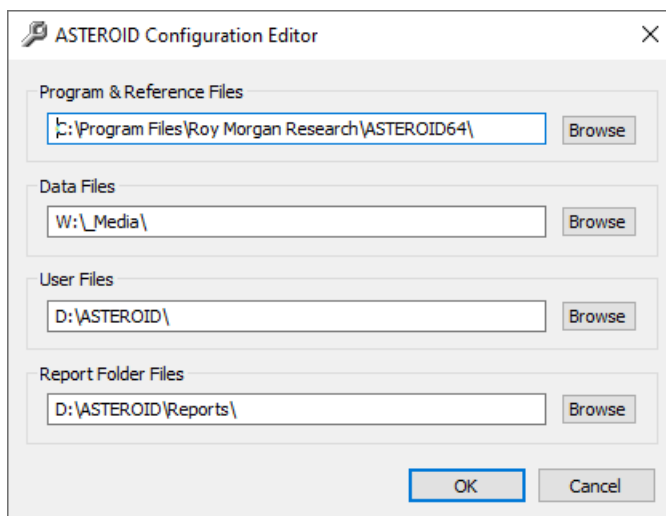
<My Documents>\ASTEROID\

where <My Documents> is the virtual root established in the Windows configuration for the current user. Any paths established by a previous ASTEROID installation are used in preference.

In a network environment, the system administrator may change the default path settings for all users by editing the file <Defaults.ini> in the Program directory.

The Data & User directories may subsequently be changed from the Directories dialog within ASTEROID, or the configuration editor.

2.8.1 Configuration Editor



The Configuration Editor <AstConfig64.exe> is a standalone tool to edit the ASTEROID directory configuration without running ASTEROID. It can be used when ASTEROID will not run due to errors in the directory configuration. The Configuration Editor is not intended for routine usage.

3 Data Installation

3.1 Installing Databases from a downloaded zip file

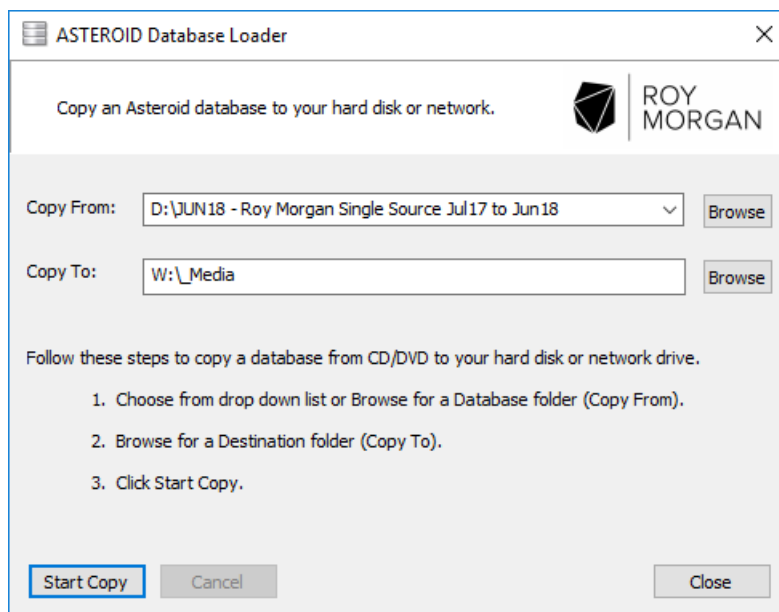
Extract the contents of the zip file to your default Data Directory.

Each database consists of several files with a common name and different file extensions. Multiple databases can be stored in the Data Directory folder and ASTEROID will display an index of these on the Open Database dialog.

3.2 Installing Database from a CD or DVD

Databases on CD/DVD may be installed to your hard disk or network using the following procedure.

- Decide on a directory to hold the database. This may be the default Data Directory or any other directory accessible to the intended user(s).
- Place the ASTEROID CD/DVD in your ROM drive.
- Run the CD browser (Browser.exe).
- Select “Install Database” from the menu.



- Choose from the drop-down list or Browse for a Database folder (Copy From).
- Browse for a destination folder (Copy To). The Asteroid Data directory is provided as a default.
- Click Start Copy.

The progress bars will indicate when the copying process has been completed.

Database files on CD/DVD are not compressed and may also be copied to your hard disk or network using Windows Explorer.

The ASTEROID software can access a database residing on CD/DVD if you wish. This feature is useful for infrequently used databases. From the ASTEROID Open Database dialog, simply browse to the appropriate folder on your CD/DVD drive.

For Further information contact:

Roy Morgan
Tonic House
386 Flinders Lane, Melbourne

Ph: +61 (3) 9629 6888

E: asteroid.support@roymorgan.com



ROY
MORGAN